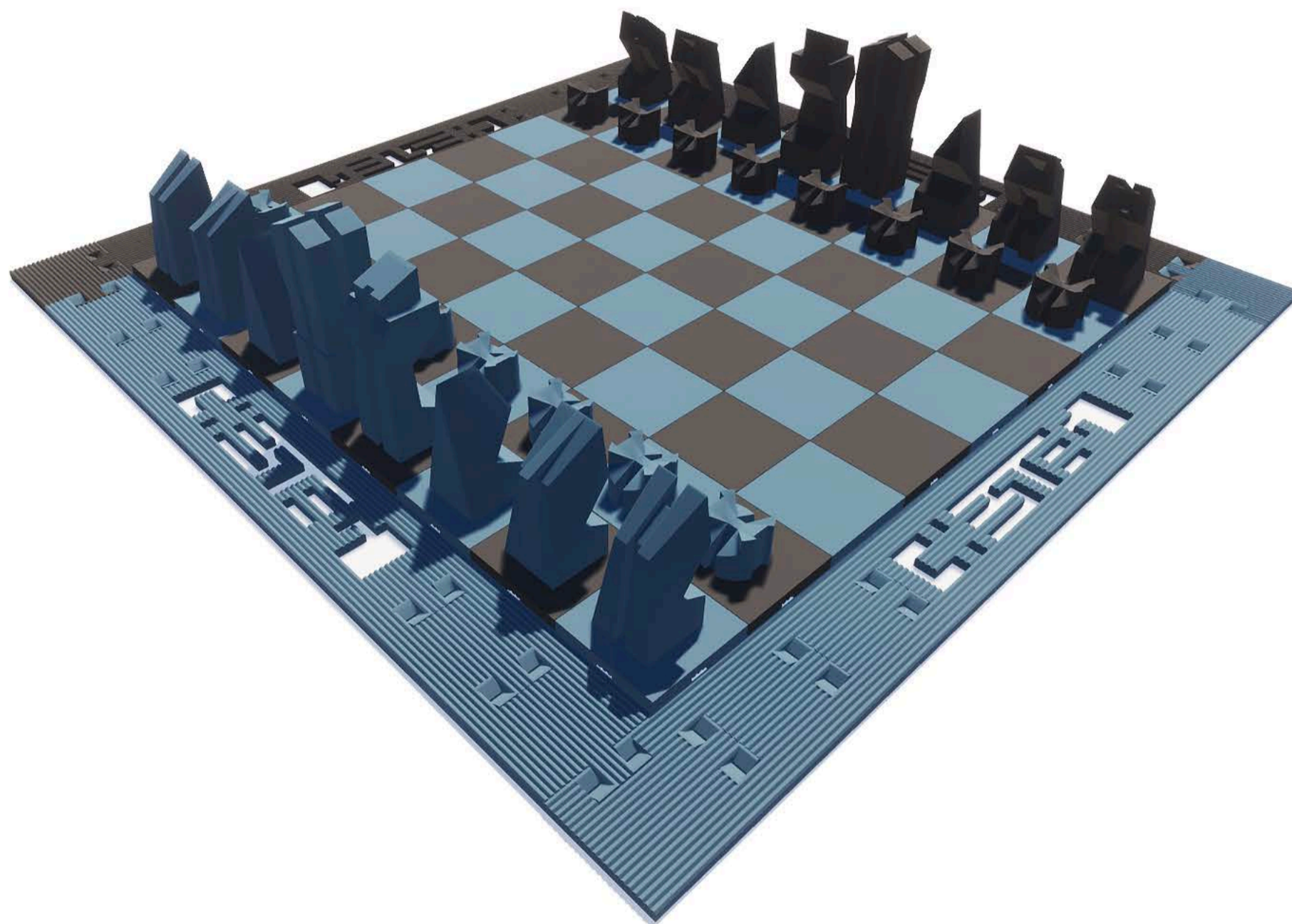




WAR8

Some may want to play the classics and here is the 8x8 chess board with normal pawns and normal chess movements and no dice.



Play the old way if you want to.

RULES AND OBJECTIVES:

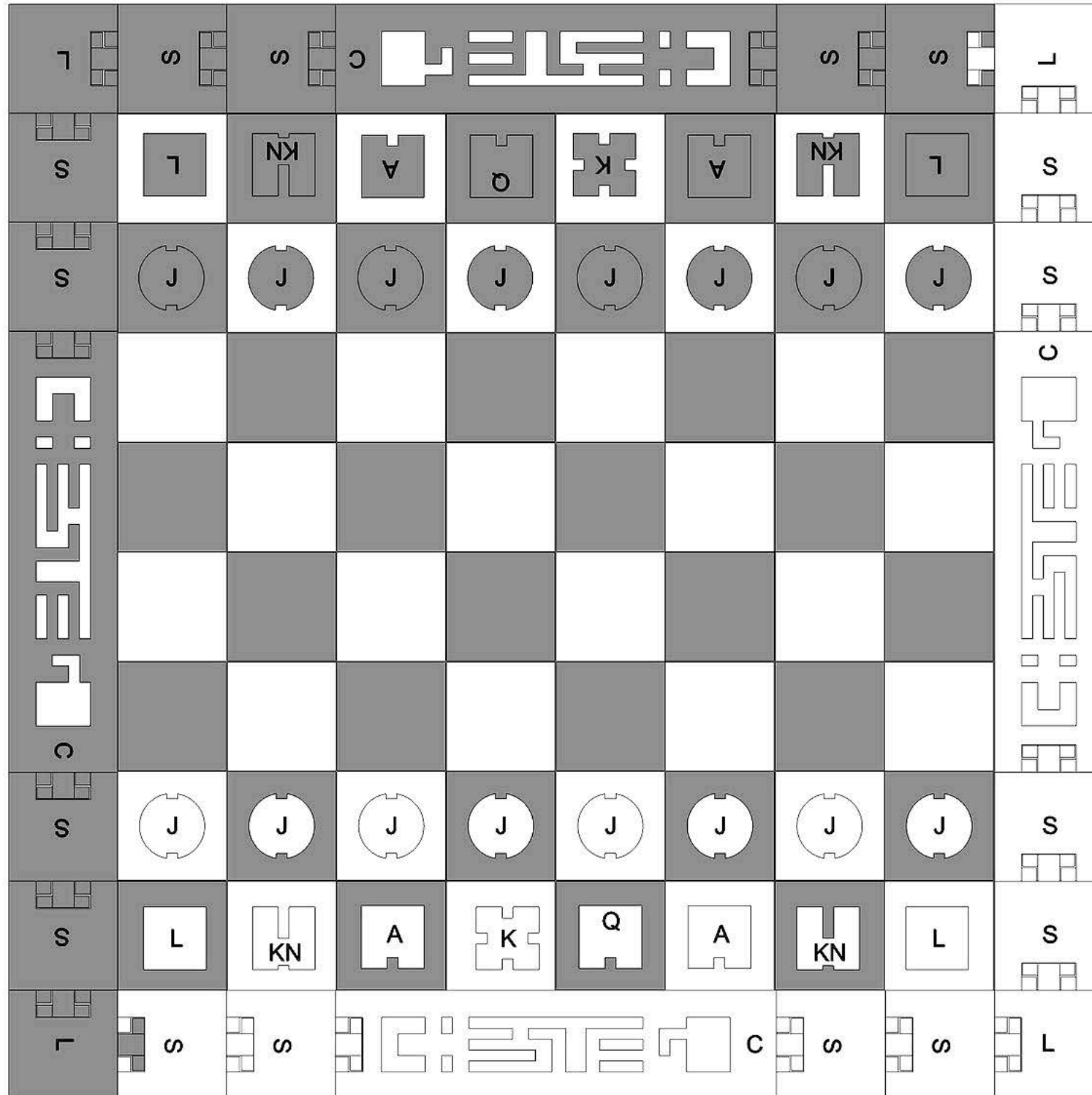
- The pawns are all clones and move only forward 1 space at a time. They can only attack diagonally forward. On their 1st movement they can move two spaces forward.
- The Archers no longer have a ranged attack because they ran out of arrows and must use daggers.
- The Knights shields are made of plastic and no long block attacks :)
- The Lancers shields are also made of plastic and no long block attacks :)

WIN CONDITION:

- Kill the King

BOARD SETUP

- 8X8 Board



PIECE RULES

K KING 1



- King can move one space in any direction.

Q QUEEN 1



- Queen can move unlimited spaces in any direction.

J PAWN 8



- Pawn can move forward only.
- Attacks at a diagonal forward.
- Can upgrade to any dead piece if they reach the back line.
- Can move 2 spaces forward for their first move

KN KNIGHT 2



- Knight moves in an "L" shape either 1 then 2 spaces or 2 then 1 space in any open direction.
- Can jump over pieces in its path

L LANCER 2



- Lancer moves unlimited spaces in a straight line.

A ARCHER 2



- Archer moves unlimited spaces diagonally.