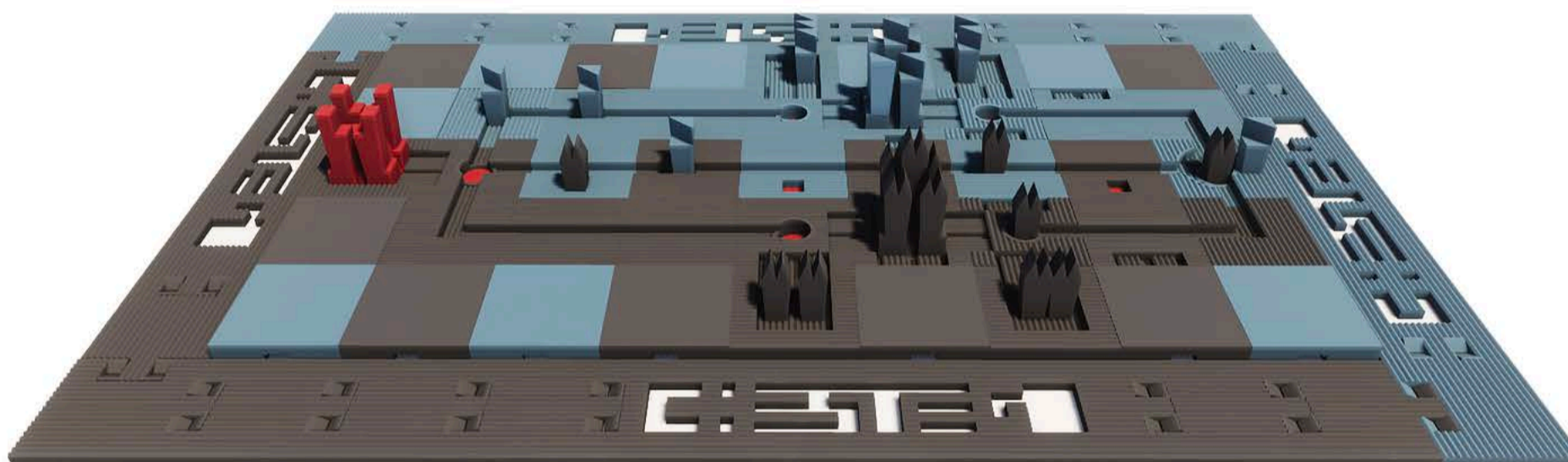
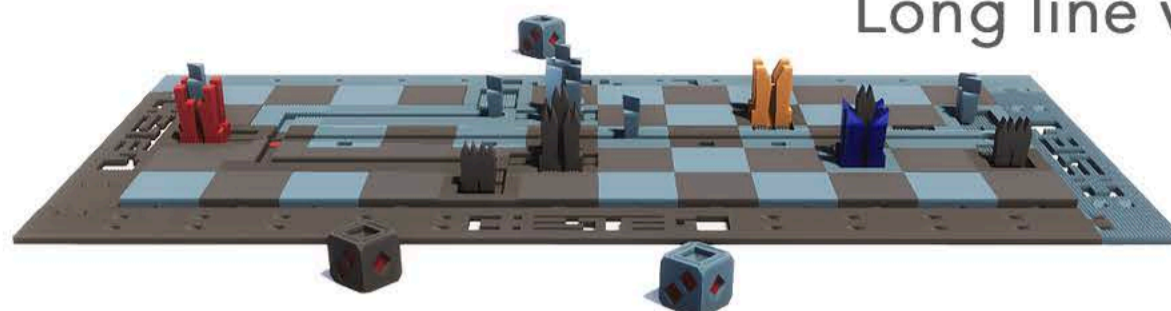




# WUR

A variation of a 4000 +  
year old game called UR.

Long line version



Short line version



Two versions shown here. The long and short line versions. The long line is definitely more challenging to get your pieces to safety.

## RULES AND OBJECTIVES:

- Move your pieces from the starting area and into the battle lane.
- Battle your way to the other side.
- If you land on a dot space you get an extra turn.
- You can choose to bring in a new piece with a roll or move the same piece.
- Only one piece may exist in any space at the same time.
- You knock back the enemy piece to start if you land on their space.
- If you land on a space with a square you gain an extra turn and you can stay in the square safely without risk of being knocked out
- While in a square, the enemy or you may occupy the same tile with another piece.

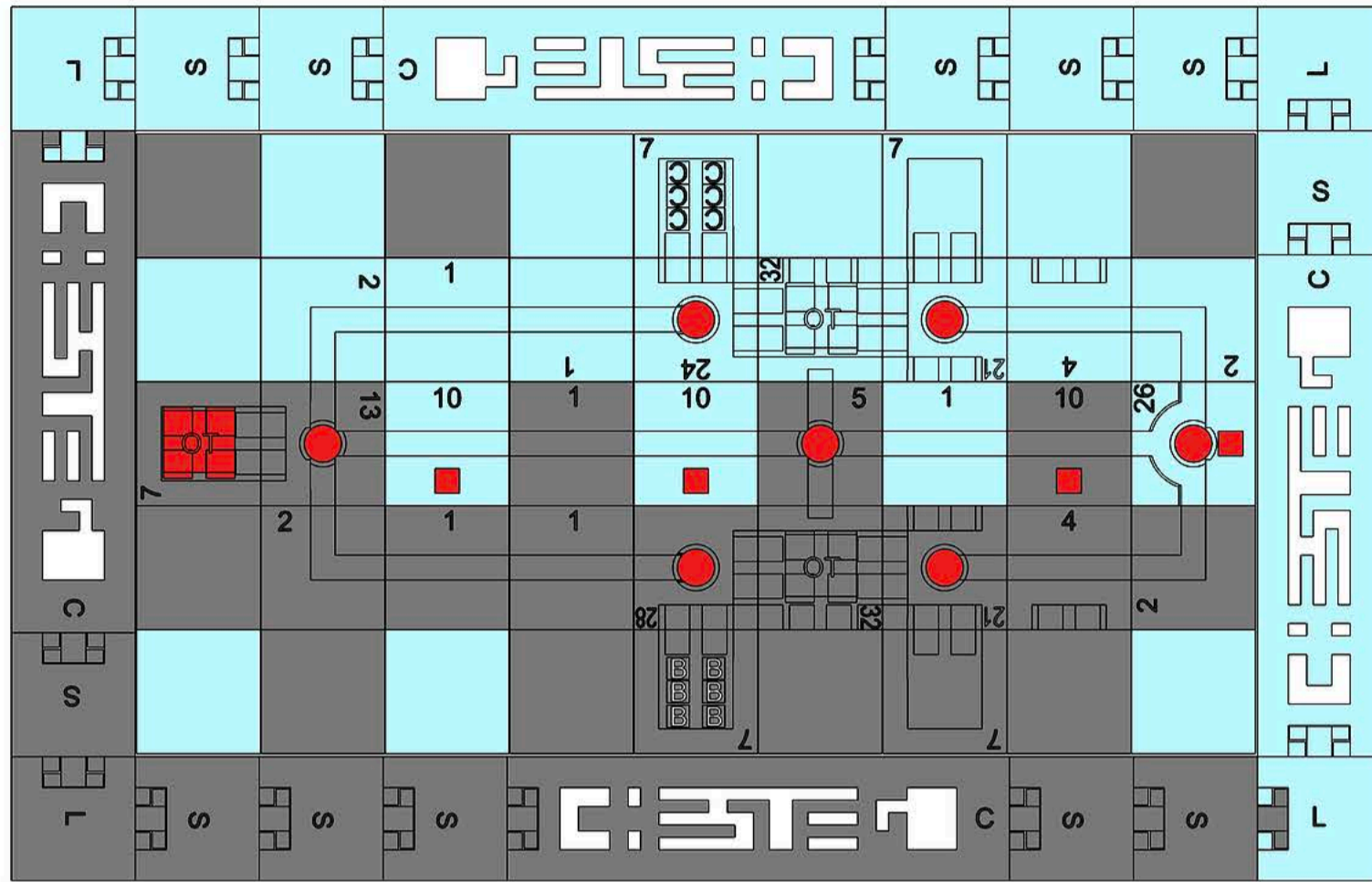
## WIN CONDITION:

- Get all of your pieces to the exit.

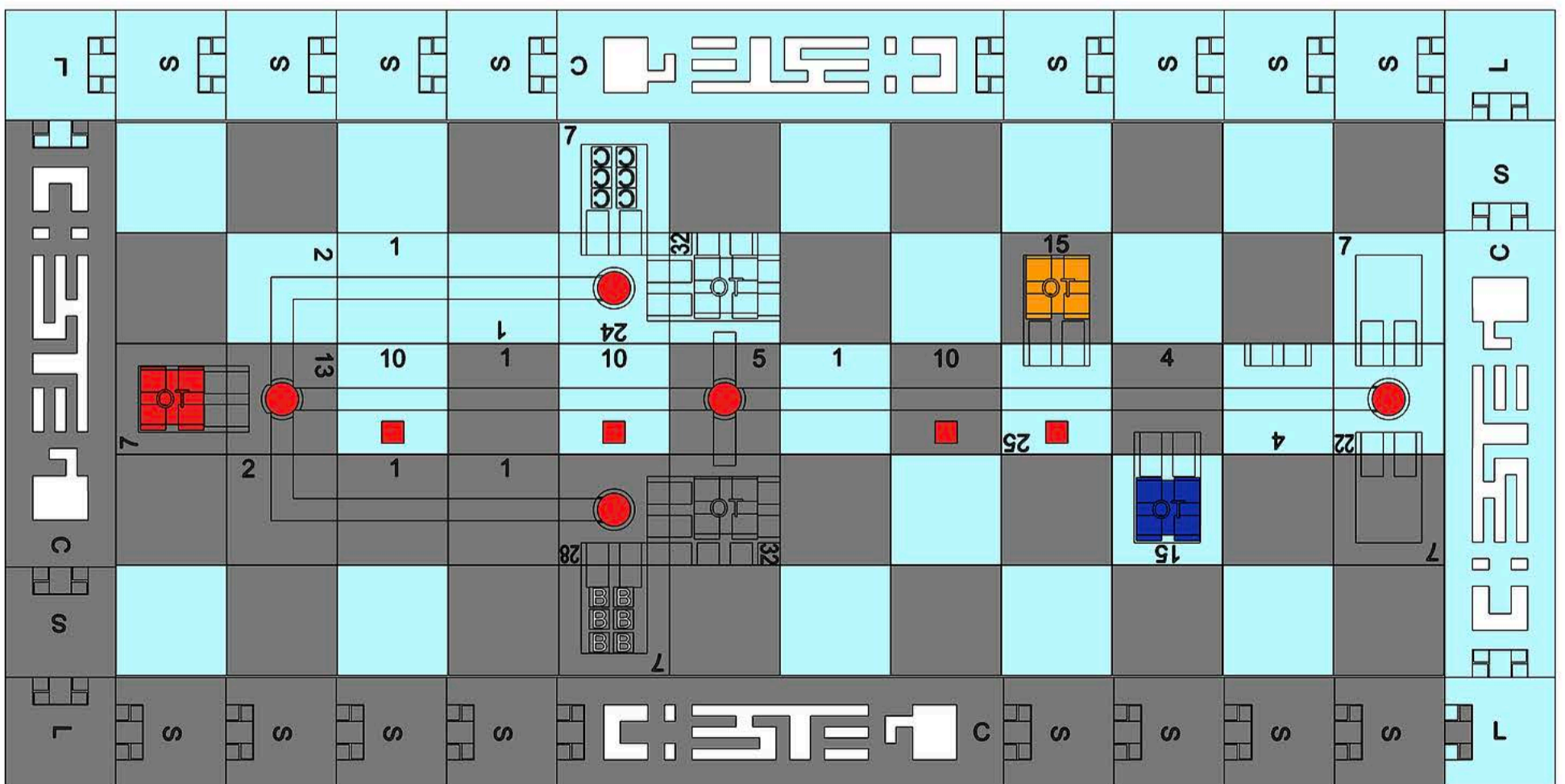
# BOARD SETUP

- See the special board setups below

## Short line version

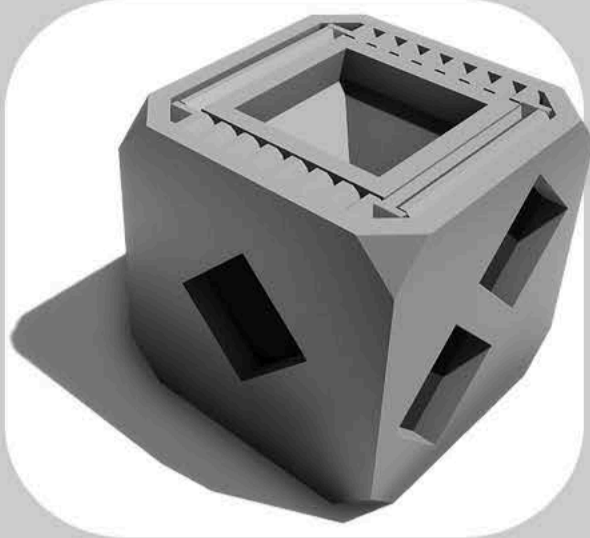


## Long line version



# PIECE RULES

DS SQUARE DIE 1



- You roll to see how many spaces you can move.
- If you roll a square you do not get to move.

C CLUSTER 6



- 6 Clusters will be placed in the two starting areas with the chosen two colors.
- Clusters cannot share the same tile.
- Landing on the opponents captured tile knocks them back to the start unless they in the safety of a square or tower.

T TOWER 3-5



- 3 in short line
- 5 in long line and placed in the designated locations. 1 for each sides color and 1 or 3 special towers.
- You must capture the tower of your color to be able to pass the tower line.
- You can capture the special tower(s) to hold a strategic position and to have an early safety for one of your clusters.
- If, after you capture the tower, the opponent lands on the dot in the cross you can jump from the tower and knock out the opponents piece. You will have to re-enter the tower to be able to pass the tower line again.