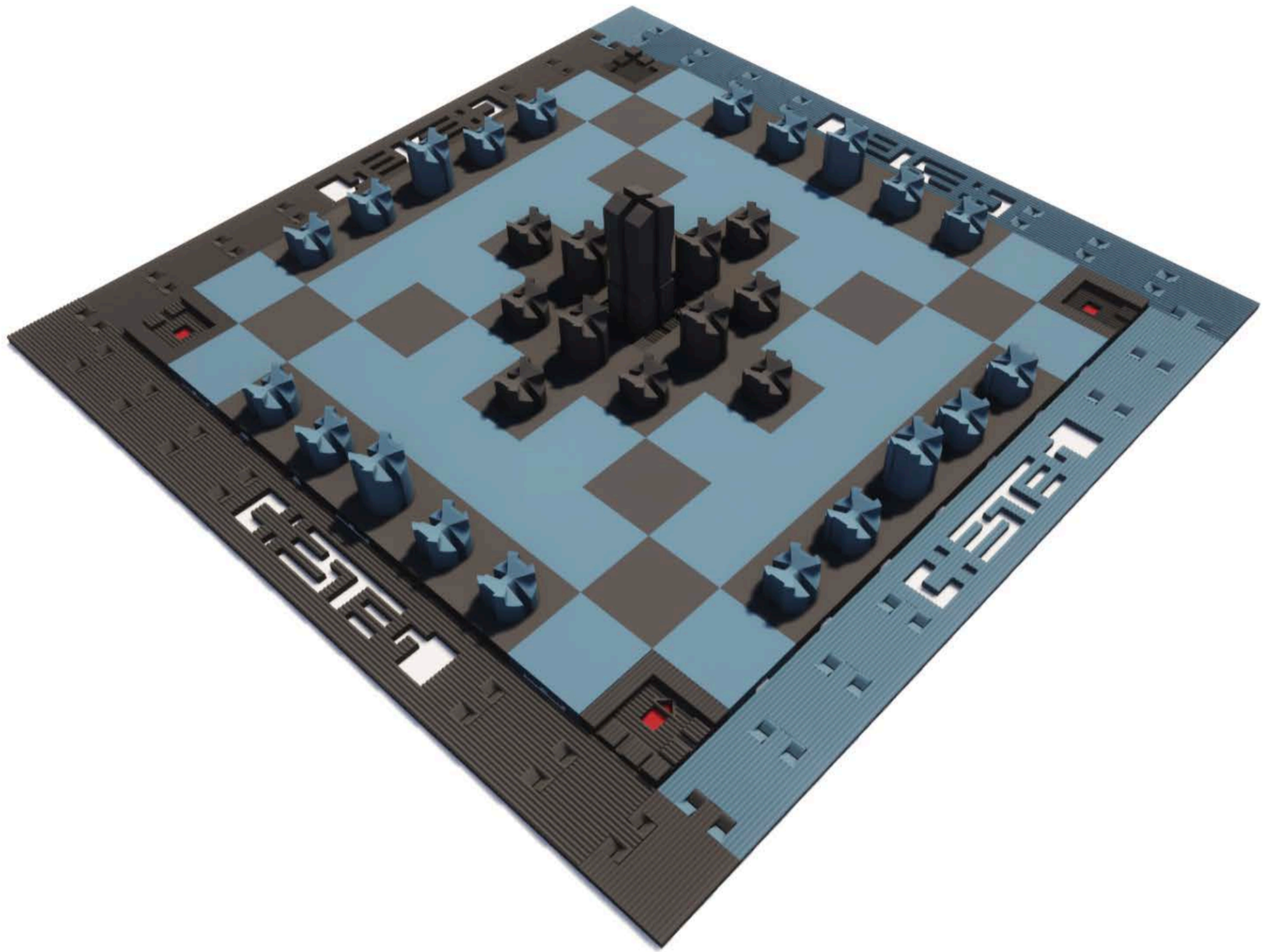




# NEF

An variation of an ancient viking game called Hnefatafl (nef-a-ta-full)



Instead of an 11x11 board this one uses a 9x9 board with a reduced amount of pieces. There are 5 King spaces which only the King can enter these areas.

## RULES AND OBJECTIVES:

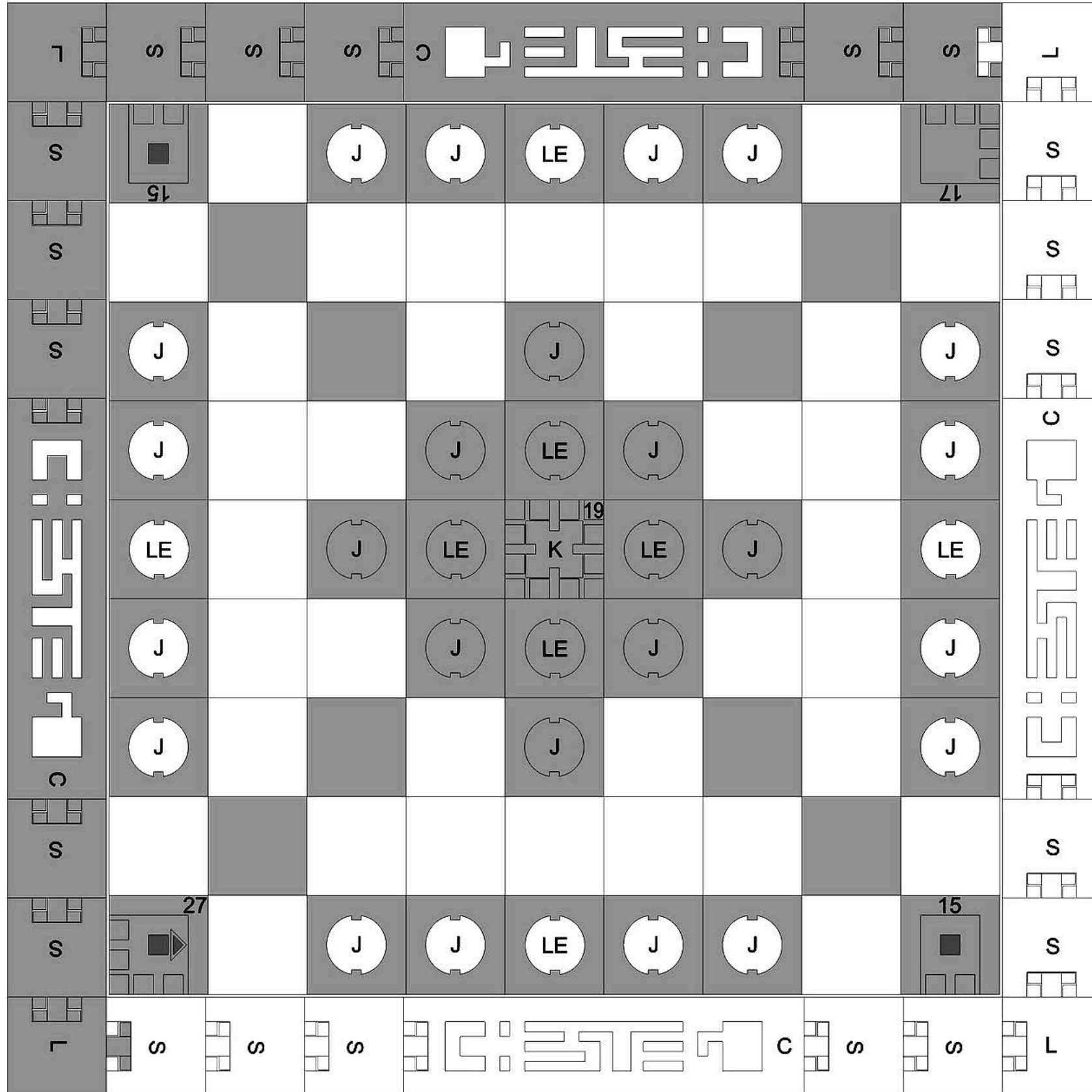
- The outer army consists of 4 Berserkers and 16 Valkyries.
- The inner army consists of 4 Berserkers and 8 Valkyries.
- Players attempt to surround enemy pieces to kill them.
- Players can pass between two enemies without being removed.
- Repeating sequences of moves are not allowed. If the same position occurs three times, with the same player to move, he must vary his attack.
- Friendly units count towards blocking friendly units.
- If the player without a King has 3 pieces or less , he gains the ability to surround the king on only two sides.

## WIN CONDITION:

- Get the King to one of the four corners or kill the King for the opponent.

# BOARD SETUP

- See the special board setup below



# PIECE RULES

Q VIKING KING 1



- Viking King can move unlimited spaces in a straight line.
- Stops at enemy or friendly units
- Has to be surround by 4 sides by either 4 enemies or 3 enemies and one King square.

J VALKYRIE 6



- Valkyrie can move unlimited spaces in a straight line.
- Stops at enemy or friendly units
- Can not enter a King space
- Must surround enemy Valkyries from two sides.
- Must surround the King and Berserkers from all four sides.

LE BERSERKER 5



- Berserker can move unlimited spaces in a straight line.
- Stops at enemy or friendly units
- Can not enter a King space
- Must surround enemy Valkyries and Berserkers from two sides.
- Must surround the King from all four sides.
- Berserkers must be surrounded by 4 Valkyries to be removed.